



Photo: HONEST ABE LOG HOMES

**PERMA-CHINK**  
SYSTEMS, INC.  
SIMPLY UNMATCHED

**YOUR WOOD CARE RESOURCE**





Since 1981, we have been dedicated to developing a comprehensive System of Products tailored to the unique needs of log and timber homes. Our products look better, last longer, and are easier to use than anything else on the market today.

## SIMPLY UNMATCHED

By dramatically reducing the time, cost, and effort required for maintenance, our system has revolutionized log and timber home care. Our superior products, combined with an unparalleled commitment to customer service, have made Perma-Chink Systems the industry leader in preserving and enhancing the natural beauty of wood homes.

We take pride in helping homeowners protect their investment while showcasing the beauty of wood for years to come.



## Quality Products

For over four decades Perma-Chink Systems, Inc. has manufactured the highest quality products and supplies specifically formulated for log and timber homes. We are committed to using only the best ingredients and most advanced technology available. Thousands of customer testimonials confirm that the quality of our products have made us an industry leader in the natural wood home market.

## Customer Service

Our commitment to customer service begins the first time you give us a call. During business hours, a product support specialist, not a machine, will greet you. Our team members are highly trained to assist you in all aspects of beautifying and maintaining your home. Because we are the manufacturer, we can answer even the most technical questions regarding our **System of Products**. We will give you the guidance, information and complimentary product samples necessary to make informed decisions about your project. We can also help you find professional contractors in your area, if necessary.

## Experience

Perma-Chink Systems, Inc. is a systems company. No other log home related company offers the broad spectrum of products that we do. We have put together a *Family of Products* that work together and complement each other. Our technical department has spent many years developing products that work, are safe to use and are compatible with one another. That is why it is so important to use our system rather than individually purchasing one or two of our products. We have stayed abreast of the latest polymer technologies resulting in better performance, increased beauty and easier application of our system which has kept us ahead of our competitors.

## Locations

You can visit any of our fully-stocked retail stores or distributor outlets located across the United States, Canada, and Europe for sales and product support. You may also call any of our toll-free numbers or contact us via our website, [www.permachink.com](http://www.permachink.com). We will arrange prompt delivery to your doorstep or job site.

- **Nationwide Network of Retail Outlets** – Easily find our products near you.
- **Expert Support** – Get ordering and technical assistance by phone or online.
- **Industry Specialists** – Work with experienced professionals who understand your needs and care about the success of your project.
- **Dedicated to Log and Timber Homes** – It's our sole focus and expertise.
- **Secure and Convenient Online Shopping** – Order with confidence anytime, anywhere.
- **Proudly Made in the USA** – Quality you can trust.

Connect with us:



1-800-548-3554

[www.permachink.com](http://www.permachink.com)

## Table of Contents

<b>Sequence of Events</b>	3
<b>Exterior Stains and Finishes</b>	
Lifeline Ultra-7	5
Lifeline Ultra-2	7
Lifeline Exterior	9
Lifeline Accents	11
Log End Seal	13
UV Boost	13
Prelude	13
Why Use Lifeline?	14
Lifeline Advance	15
Deck Defense	17
Log & Timber Defense	19
<b>Interior Stains and Finishes</b>	
Lifeline Interior	21
Lifeline Acrylic	23
Sure Shine	24
PCS Clear Shield	25
<b>Chinking and Specialty Sealants</b>	
Sealants Overview	26
Energy Seal	27
Perma-Chink	28,29
Chink-Paint	31
Check Mate 2	33
Application Tools	33
Woodsman	34
Log Home Gasket Tape	34
Grip Strip	35
Backer Rod	35
Log Gap Cap	35
Sealing Around Windows & Doors	37
Application Guns	37
<b>Preservatives</b>	
Tim-Bor	38
Cobra Rods	38
PenaShield	38
Bora-Care	39
<b>Wood Cleaners and Strippers</b>	
Log Wash	41
Cedar Wash	41
Oxcon	42
Wood ReNew	42
pH Strips	42
StripIt	43
S-100	43
<b>Wood Restoration Epoxies</b>	
M-Balm and E-Wood	44
Epoxy Paste	45
<b>Fasteners</b>	
Log Boss	46
<b>Wood Shapers</b>	
Blaster Buddy	47
Osborn, Sanding Disks	47
<b>Locations</b>	49



# Log and Timber Home Manufacturers

## Our Partners

## They Build - We Finish

START HERE TO MAKE YOUR LOG or TIMBER HOME DREAM COME TRUE!



1-800-777-7288  
[www.satterwhite-log-homes.com](http://www.satterwhite-log-homes.com)



1-800-438-8274  
[www.stonemill.com](http://www.stonemill.com)



Whisper Creek  
1-877-289-9254  
[www.whispercreekloghomes.com](http://www.whispercreekloghomes.com)



1-888-563-3275  
[www.blueridgelogcabins.com](http://www.blueridgelogcabins.com)



1-276-546-5647  
[www.oldvirginaloghomes.com](http://www.oldvirginaloghomes.com)



1-330-852-2164  
[www.walnutvalleyhomes.com](http://www.walnutvalleyhomes.com)



1-606-291-9020  
Kountry Korner Cabins



1-866-436-2522  
[www.ksmloghomes.com](http://www.ksmloghomes.com)



1-800-231-3695  
[www.honestabe.com](http://www.honestabe.com)



1-800-270-5025  
[www.goldeneagleloghomes.com](http://www.goldeneagleloghomes.com)



1-800-726-0708  
[www.alhloghomes.com](http://www.alhloghomes.com)



1-888-675-3678  
[www.elohomes.com](http://www.elohomes.com)



1-802-755-6298  
[www.goodridgelumber.com](http://www.goodridgelumber.com)



1-800-818-9971  
[www.woodworkersshoppe.com](http://www.woodworkersshoppe.com)



1-800-368-1015  
[www.hochstetlerloghomes.com](http://www.hochstetlerloghomes.com)



1-800-341-1566  
[www.wardcedarloghomes.com](http://www.wardcedarloghomes.com)

[www.permachink.com](http://www.permachink.com)



1-800-247-4442  
[www.hearthstonehomes.com](http://www.hearthstonehomes.com)



1-864-457-2444  
[www.greenriverlogcabins.com](http://www.greenriverlogcabins.com)



1-330-359-5726  
[www.fairviewloghomes.net](http://www.fairviewloghomes.net)



1-717-445-5522  
[www.lancasterlogcabins.com](http://www.lancasterlogcabins.com)



1-800-619-1156  
[www.cariboucreek.com](http://www.cariboucreek.com)



1-518-563-3810  
[www.cedarknollloghomes.com](http://www.cedarknollloghomes.com)



1-800-571-3296  
[www.mclh.net](http://www.mclh.net)



1-800-732-5564  
[www.realloghomes.com](http://www.realloghomes.com)



# Sequence of Events

## Exterior

### Sequence of Events When Restoring an Existing Home

1. Repair any areas of log rot. If using *Log End Seal*, sand the log ends with 60-80 grit sandpaper.
2. *Energy Seal* or *Perma-Chink* around windows, doors, butt joints, and between logs. Allow to cure one week. This will help prevent water or blasting media from getting inside the home.
3. Clean or strip off the old finish. Rinse thoroughly; use pH strips to ensure ample rinsing has been done. Allow the wood to completely dry. If media blasted, wash surface with *Log Wash* solution.
4. Apply a Borate treatment (recommended). Allow to dry according to label recommendations.
5. If more than seven days have passed since step 3 or 4, wash down surface with a *Log Wash* solution. Rinse well and allow wood to completely dry.
6. Apply *Check Mate 2* to upward facing checks. Allow *Check Mate 2* to cure at least 3 hours before staining.
7. If blasted, apply *Prelude* clear wood primer before *Lifeline* stain. If blasting was not done you can start applying *Lifeline* stain according to label guidelines.
8. Repair chinking or apply *Chink-Paint* if applicable.
9. Apply *Log End Seal*, if desired.
10. Apply *Lifeline Advance* gloss or satin topcoat.

### Sequence of Events for New Construction

1. Sanding with 60-80 grit sandpaper is recommended for decking, or if using *Log End Seal* on the log ends.
2. Clean home to remove dirt, brown stain and mill glaze. If gray wood or mill glaze is present use *Wood ReNew*. If gray wood and mill glaze are not present use *Log Wash*. Rinse thoroughly and allow wood to completely dry.
3. Apply a Borate treatment (recommended). Allow to dry according to label recommendations.
4. Apply *Energy Seal* or *Perma-Chink* around windows, doors, butt joints, and between logs. Apply *Check Mate 2* to upward facing checks. Allow to cure at least 3 hours.
5. If more than seven days have passed since step 2 or 3, wash down surface with a *Log Wash* solution. Rinse well and allow wood to completely dry.
6. Apply *Lifeline* stain according to label guidelines.
7. Chink home if applicable.
8. Apply *Log End Seal* if desired.
9. Apply *Lifeline Advance* gloss or satin topcoat.



Professional Referrals



In-House Workshops



Personal Web Training



Training Seminars



# Wood Stain and Finishes

## *Exterior*



For more information about this home visit <https://www.honestabe.com/southern-grace-award>



For more information about this home visit <https://www.permachink.com/blog/magnificent-timber-frame-home>

# Wood Stain and Finishes

## Exterior

### Lifeline Ultra-7™

#### Our Highest Performance Transparent Wood Stain for Walls

*Lifeline Ultra-7* is our highest quality wood stain enhanced with an advanced polymer resin that delivers sophisticated color, unmatched durability and maximum coverage.

#### Appearance:

By choosing *Lifeline Ultra-7*, you are ensuring that the finish will look as beautiful years after application as the day it was applied.

#### Longevity:

After multiple exposure tests in harsh-weather areas across the country, *Lifeline Ultra-7* stands out as THE top-of-the-line, long-lasting finish.

#### Value:

There is no doubt that *Lifeline Ultra-7* will save you time and money in the long run. Lasting longer equates to less labor expense over the life of the finish.

- High coverage rate
- Excellent UV protection
- Easy maintenance procedures
- Breathable film allows unseasoned logs to dry out
- For walls and other vertical surfaces
- Comes with a **3-5 year limited warranty**
- Clear topcoat with *Lifeline Advance* to complete the system
- Custom colors available

#### Environment:

Low VOC, water-based *Lifeline Ultra-7* meets and exceeds all standards and environmental requirements in North America.

#### Surface Preparation:

Must be applied to clean, dry surface.

#### # of Coats:

One coat application.  
Topcoat with *Lifeline Advance* Gloss/Satin Clear Topcoat.

#### Application Rates:

250-350 sq.ft. per gallon depending on the porosity of the wood.

#### Surface Temperature:

40° F to 90° F

#### Application Methods:

Airless sprayer with back-brushing to ensure even coverage OR all by brush. Stir before and frequently during application.

#### Drying Time:

Dry to the touch in 4 to 6 hours.  
Cures in 72 hours.

#### Clean up:

Soap and water.

#### Packaging:

1-gallon container.  
5-gallon pail.  
Samples available.

#### Storage/Shelf Life:

Freeze/thaw stable.  
3 years.



Caramel #325



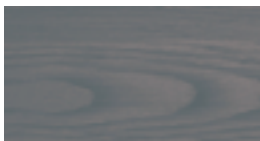
Cedar #385



Oak #332



Bronze #374



Rustic Gray #372



Smoke #363



Chestnut #365



Almond #345



Eucalyptus #390

Application techniques, wood species and other factors will affect the actual color when finished. We supply free samples for evaluation on your specific wood.



Color in this photo closely represents Lifeline Ultra-7 Rustic Gray. Actual results will vary.

Read more about this home on <https://www.permachink.com/blog/more-than-just-log-homes>





# Wood Stain and Finishes

## *Exterior*



SATTERWHITE LOG HOMES

Color in this photo closely represents Lifeline Ultra-2 Hazelnut. Actual results will vary. Contact Perma-Chink Systems for samples.



# Wood Stain and Finishes

## Exterior

### Lifeline Ultra-2™

#### Our Best Selling, Highest Performance Exterior Wall Stain

No other transparent finish system lasts as long as *Lifeline Ultra-2* with a clear topcoat of *Lifeline Advance*. This advanced waterborne formula enriches the look of natural wood grain and protects against damaging UV rays from the sun.

Homeowners and contractors appreciate just how easy it is to apply with an airless sprayer or brush. Remember – not all waterborne stains are created equal. Get a free sample of *Lifeline Ultra-2* and see for yourself.

- Unparalleled UV protection
- Lowest maintenance of any exterior finish
- Breathable film allows unseasoned logs to dry out
- High coverage rates
- Superior color retention
- Comes with a **3-5 year limited warranty**
- Environmentally friendly
- Custom colors available



Color in this photo closely represents Lifeline Ultra-2 Dark Honey.

#### Surface Preparation:

Must be applied to clean, dry surface.

#### Application Rates:

1st coat - 350-450 sq.ft. per gallon depending on the porosity of the wood.

2nd coat - 600-800 sq.ft. per gallon.

#### Surface Temperature:

40° F to 90° F

#### Application Methods:

Airless sprayer with back-brushing to ensure even coverage OR all by brush. Stir before and frequently during application.

#### # of Coats:

Two-coat application. Topcoat with Lifeline Advance Gloss/Satin Clear Topcoat.

#### Drying Time:

Dry to the touch in 2 to 4 hours. Cures in 72 hours.

#### Clean up:

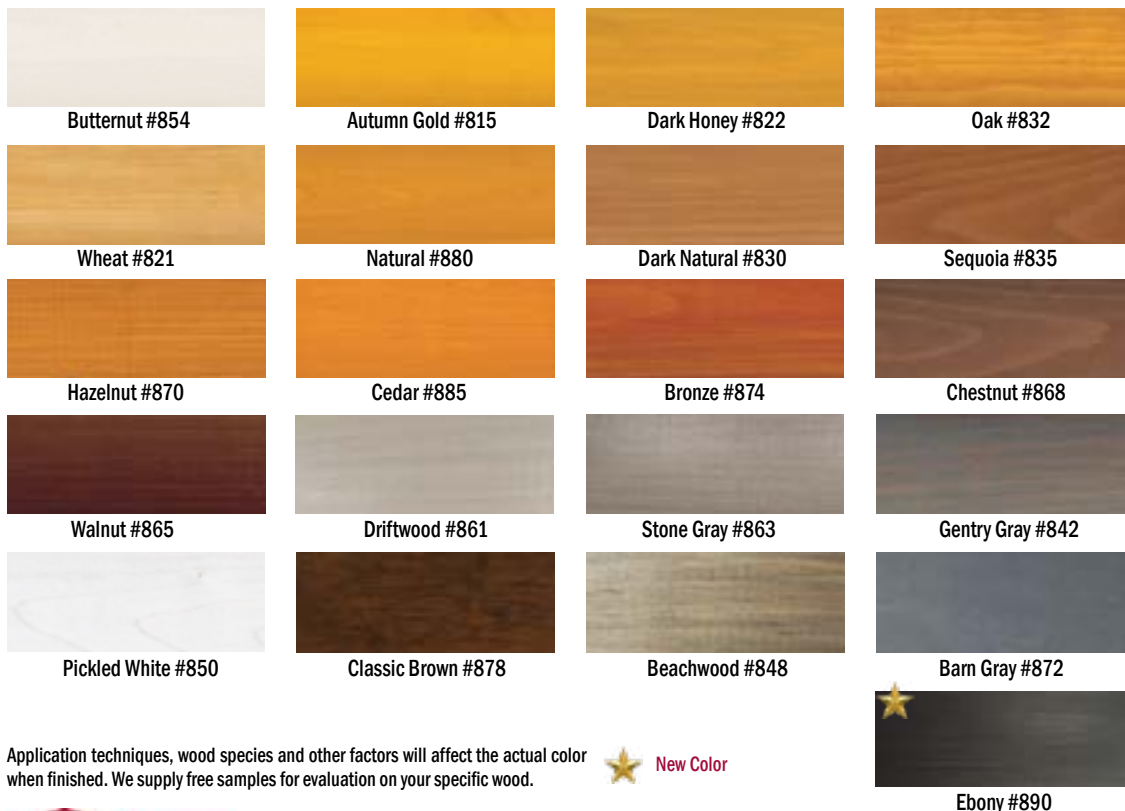
Soap and water.

#### Packaging:

1-gallon container. 5-gallon pail. Samples available.

#### Storage/Shelf Life:

Freeze/thaw stable. 3 years.



Application techniques, wood species and other factors will affect the actual color when finished. We supply free samples for evaluation on your specific wood.



1-800-548-3554

[www.permachink.com](http://www.permachink.com)





# Wood Stain and Finishes

## *Exterior*



Color in this photo closely represents Lifeline Ultra-2 Dark Natural. Actual results will vary. Contact Perma-Chink Systems for samples.



Color in this photo closely represents Lifeline Ultra-2 Stone Gray. Actual results will vary. Contact Perma-Chink Systems for samples.



# Wood Stain and Finishes

## Exterior

### Lifeline Exterior™

#### Our Value Priced Exterior Wall Stain

Our original exterior wall formula has been updated and improved for over 30 years. *Lifeline Exterior* forms a thin film on the log surface, providing optimal protection..

Its breathability and flexibility allows logs to go through seasonal expansion and contraction while drying out to their core. Apply a clear topcoat of *Lifeline Advance* to maximize durability and minimize maintenance cost and labor.

- Excellent UV protection
- Easy application and maintenance
- Breathable film allows logs to dry out
- High coverage rates
- Long-lasting color retention
- Dries fast to allow two-coat application the same day
- Environmentally friendly
- Clear topcoat with *Lifeline Advance* to complete the system
- Custom colors available

#### Surface Preparation:

Must be applied to clean, dry surface.

#### Application Rates:

1st coat - 350-450 sq.ft. per gallon depending upon the porosity of the wood.

2nd coat - 600-800 sq.ft. per gallon.

#### Surface Temperature:

40° F to 90° F

#### Application Methods:

Airless sprayer with back-brushing to ensure even coverage OR all by brush. Stir before and frequently during application.

#### # of Coats:

Two coats application.  
Topcoat with *Lifeline Advance* Gloss/Satin Clear Topcoat.

#### Drying Time:

Dry to the touch in 2 to 4 hours.  
Cures in 72 hours.

#### Clean up:

Soap and water.

#### Packaging:

1-gallon container.  
5-gallon pail.  
Samples available.

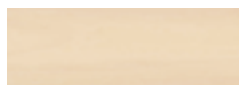
#### Storage/Shelf Life:

Freeze/thaw stable.  
3 years.



Hearthstone Homes

Color in this photo closely represents Lifeline Exterior Hazelnut. Actual results will vary.



Butternut #154



Dark Honey #122



Dark Natural #130



Hazelnut #170



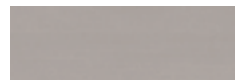
Cinnamon #174



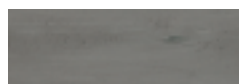
Bronze #175



Walnut #165



Driftwood #161



Stone Gray #163



Gentry Gray #142

Application techniques, wood species and other factors will affect the actual color when finished. We supply free samples for evaluation on your specific wood.



1-800-548-3554

[www.permachink.com](http://www.permachink.com)





# Wood Stain and Finishes

## *Exterior & Interior*



GOLDEN EAGLE LOG HOMES

Color in this photo closely represents Lifeline Accents Black Walnut. Actual results will vary. Contact Perma-Chink Systems for samples.



# Wood Stain and Finishes

## Exterior & Interior

### Lifeline Accents™

#### Inspired Collection of Transparent Stains for Interiors and Exteriors

*Lifeline Accents* is our exceptional two-coat color finish developed to make your home look fashionable. *Lifeline Accents* was influenced by global trends which encouraged us to provide our customers with exciting new colors and style.

The exceptional colors create a wonderful accent for your wood trim, interior and exterior walls, millwork, timber, furniture and other wood elements of your home.



Color in this photo closely represents Lifeline Interior Butternut.

- High coverage rate
- Clear topcoat with *Lifeline Advance* to complete the system for exterior and *Lifeline Acrylic, Sure Shine, or PCS Clear Shield* for interior
- Excellent UV protection
- Low maintenance
- Long-lasting color retention
- Custom colors available



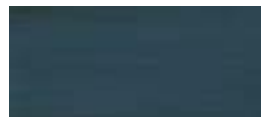
Pickled White #762



Evergreen #770



Spruce #766



Midnight #714



Espresso #746



Jade #774



Fern #782



Azure #718



Bordeaux #738



Black Walnut #742



Garnet #726



Cinnabar #730



Barn Red #734



Newport #722



Sand #754



Umber #758



Forest #778



Charcoal #750

**Surface Preparation:**  
Must be applied to clean, dry surface.

**Application Rates:**  
1st coat - 350-450 sq. ft. per gallon depending on the porosity of the wood.  
2nd coat - 600-800 sq. ft. per gallon.

**Surface Temperature:**  
40° F to 90° F

**Application Methods:**  
Airless sprayer with back-brushing to ensure even coverage OR all by brush. Stir before and frequently during application.

**# of Coats:**  
**For Exterior**  
Two-coat application. Topcoat with Lifeline Advance Gloss or Satin Clear Topcoat.  
**For Interior**  
One or two coat application. Topcoat with Lifeline Acrylic, Sure Shine, or PCS Clear Shield.

**Drying Time:**  
Dry to the touch in 2 to 4 hours. Cures in 72 hours.

**Clean up:**  
Soap and water.

**Packaging:**  
1-gallon container. 5-gallon pail available upon request. Samples available.

**Storage/Shelf Life:**  
Freeze/thaw stable. 3 years.



Application techniques, wood species and other factors will affect the actual color when finished. We supply free samples for evaluation on your specific wood.

# Wood Stain and Finishes

## *Exterior*





# Wood Stain and Finishes

## Exterior

### Log End Seal™

#### Protect Exposed End-Grain from the Elements

**Surface Preparation:**

Must be applied to clean, dry surface.  
Sand log ends before applying Lifeline stain.

**Application Rates:**

30 to 40 sq.ft. per gallon. One gallon will coat approx. 180 six inch diameter log ends or 100 eight inch diameter log ends.

**Surface Temperature:**

40 ° F to 90 ° F

**Application Methods:**

Paint pad or sponge.  
Short bristled brush.

**# of Coats:**

One coat application.

**Drying Time:**

Dry to the touch in 2 to 4 hours.

**Clean up:**

Soap and water.

**Packaging:**

1-gallon container.

**Storage/Shelf Life:**

DO NOT FREEZE!  
3 years.

The end-grain of wood is particularly vulnerable to sun, rain, snow and ice, which can lead to excessive cracks and checks. End-grain can also act like tiny straws, drawing excessive moisture into the wood. *Log End Seal* provides a durable, water-repellent barrier against these problems before they begin.



Goes on white and dries clear



### Prelude™

#### A Clear Primer for Porous Wood Surfaces

One coat of *Prelude* clear wood primer seals porous or rough wood surfaces. *Prelude* is highly recommended following the use of blast media to remove old finishes because this process opens the wood pores. This removal can create a challenge for getting an even finish color while staining.

*Prelude* provides the foundation to restore consistent color and a uniform finished appearance with *Lifeline* stains. *Prelude* clear wood primer contains *UV Boost* for additional UV protection. *Prelude* is a primer and should never be used as a final finish.



Not sealed with Prelude

Sealed with Prelude

**Surface Preparation:**

Must be applied to clean, dry surface.

**Application Rates:**

200 to 400 sq.ft. per gallon depending on the porosity of the wood.

**Surface Temperature:**

40 ° F to 90 ° F

**Application Methods:**

Airless sprayer with back-brushing to ensure even coverage OR all by brush. Stir before and frequently during application.

**# of Coats:**

One coat application.

**Drying Time:**

Dry to the touch in 2 to 4 hours.  
Cures in 72 hours.

**Clean up:**

Soap and water.

**Packaging:**

1-gallon container.  
5-gallon pail.  
Samples available.

**Storage/Shelf Life:**

Freeze/thaw stable.  
3 years.



### UV Boost™

#### Additional Protection for High Sun Exposure Areas

The addition of *UV Boost* to the first coat of *Lifeline Exterior*, *Lifeline Accents*, *Lifeline Interior* imparts additional protection against fading and graying. It is especially useful in interior finishes to reduce the “picture frame” effect on walls and carpeted floors. Since *UV Boost* must be in contact with bare wood for it to be effective, it only needs to be added to the first coat of finish.

Note: *Lifeline Ultra-2*, *Lifeline Ultra-7* and *Prelude* already contain *UV Boost*.

**Container Sizes**

For adding to one gallon or five gallons of finish.

# Wood Stain and Finishes

## Exterior

## Why Use *Lifeline*™ Stain and Clear Topcoats?

### The Systems Approach to Log Home Care

### Appearance

*Lifeline* stain enhances the natural grain and texture of your wood, bringing out its beauty and character. Paired with *Lifeline* clear topcoats, your finish gains added depth and protection, allowing you to choose the perfect level of sheen. The result? A home that looks as refined and elegant as a fine piece of furniture.

### Longevity

Perma-Chink Systems has tested over 60 different finishes from more than 20 manufacturers. *Lifeline Ultra-2* with *Lifeline Advance* clear topcoat has outlasted every one of those finishes in side-by-side comparisons on test walls. Our formulations use components that are individually specialized for their function. Among many other differences, our clear-coats are not just clear *Lifeline*; they are a completely different formulation that performs better than a simple clear version of the color coat.



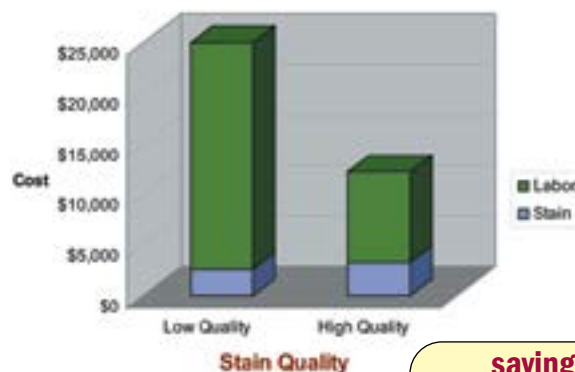
<https://www.permachink.com/blog/money-matters-why-a-high-quality-wood-finish-saves-money-and-time>

### Value

No other stain gives you more for your money. All *Lifeline* finishes are formulated to provide maximum coverage to lower your cost for the job as compared to common stains that require much more material for your job. Remember to compare coverage rates to make an accurate comparison for your material costs.

### Greatest Value for Your Money

Cost Over 10-Year Period



**savings  
over \$14,000!!!**

### Do the math and get the greatest value for your time!

It is no surprise that Perma-Chink Systems' premium exterior stains and finishes help you save time and money on log home maintenance. Designed for long-lasting protection, our high-quality products ensure your home stays beautiful and well-preserved for years to come.

### Environment

*Lifeline* has always been formulated to be gentle on the environment. It is water-based, extremely low VOC and exhibits low odor during drying. After it is dry, it has no odor, so it is demanded by many of our customers who have chemical sensitivities. Your tools clean up with just soap and water. It just cannot get any easier!

*"I have been very impressed with how well your product has preserved my home for nearly three decades." Greg D. from Oregon.*



# Wood Stain and Finishes

## Exterior

### Lifeline Advance™

Gloss/Satin

#### Clear Topcoat - the Second Component of Our Exterior Finish System



Satin

Gloss

*Lifeline Advance* works just like the clear-coat on your car to protect the color coat underneath. It extends the life of the finish system while adding depth and highlights to the appearance. It makes your exterior walls easier to keep clean.

*Lifeline Advance* has the right permeability to keep the film breathable while repelling water. *Lifeline Advance* is the second component in our exterior wall finish system that includes a limited warranty when used with *Lifeline Ultra-2* or *Lifeline Ultra-7*.

- Simplifies and reduces maintenance of your exterior finish
- Significantly extends the life of the finish system



Pinhoti Peak is a Showhouse designed by Chip Wade of Wade Works Creative. For more information visit <https://pinhotipeak.com/permachink/>

- Adds depth and luster to appearance
- Extremely high coverage
- Breathable to allow logs to dry out
- Environmentally friendly
- Only for use over *Lifeline Ultra-2*, *Lifeline Ultra-7*, *Lifeline Exterior* or *Lifeline Accents*

**Surface Preparation:**  
Must be applied to clean, dry surface.

**Application Rates:**  
500-700 sq.ft. per gallon for rough surfaces.  
600-800 sq.ft. per gallon for smooth surfaces.

**Surface Temperature:**  
40° F to 90° F

**Application Methods:**  
Airless sprayer with back-brushing to ensure even coverage OR all by brush. Stir before and frequently during application.

**# of Coats:**  
One coat application over LIFELINE stain.

**Drying Time:**  
Dry to the touch in 2 to 4 hours.  
Cures in 72 hours.

**Clean up:**  
Soap and water.

**Packaging:**  
1-gallon container.  
5-gallon pail.  
Samples available.

**Storage/Shelf Life:**  
Freeze/thaw stable.  
3 years.

#### MILDEW-X™



Add an extra measure of protection against surface mold by adding *Mildew-X* to the clear topcoat.





# Wood Stain and Finishes

## *Exterior*



Color in this photo closely represents Lifeline Ultra-2 Beachwood with Lifeline Advance Gloss. Actual results will vary. Contact Perma-Chink Systems for samples.



# Wood Stain and Finishes

## Exterior

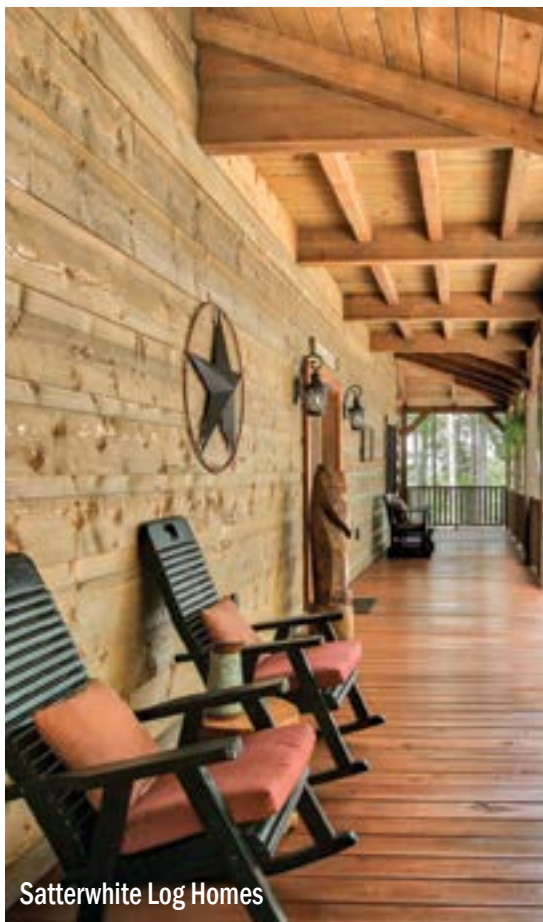
### Deck Defense™

#### Exterior Deck Finish

*Deck Defense* has been reengineered with an advanced formula for enhanced performance, longer durability, and easier application. Though fully waterborne, it penetrates like an oil-based finish - yet unlike oil products, it cures into a protective lattice that reinforces and strengthens the wood's natural cellulosic fibers. This unique action protects the wood from the inside out, not just on the surface. Homeowners can feel confident knowing their investment is protected from the damaging effects of wind, sun, and water.

Routine maintenance is now easier than ever - there's no need to strip off old *Deck Defense* before reapplication, as it won't flake or peel when properly applied. Simply clean the surface to remove dirt and contaminants, allow it to dry completely and apply a fresh maintenance coat.

- Excellent weather resistance
- Excellent color retention
- Allows texture and grain to show
- Low odor and VOC
- Contains trans-oxide pigment
- Easy application
- Easy soap and water clean-up
- Complementary *Lifeline* colors and custom colors available



Color in this photo closely represents Deck Defense Redwood.

**Surface Preparation:**  
Must be applied to clean, dry surface.

**Application Rates:**  
Approximately 175-250 sq.ft. per gallon depending on the porosity of the wood. Please refer to product label for application instructions.

**Surface Temperature:**  
40° F to 95° F

**Application Methods:**  
Airless sprayer.  
Pump up sprayer.  
Brush.  
Roller.  
Pads.  
Back-brushing required to ensure even coverage. Stir before and frequently during application.

**# of Coats:**  
Up to two coats (refer to label for specific directions for two coat application).

**Drying Time:**  
Dry to the touch in 15 minutes.  
Tack free in 30 minutes.

**Clean up:**  
Soap and water.

**Packaging:**  
1-gallon container.  
5-gallon pail.  
Samples available.

**Storage/Shelf Life:**  
Freeze/thaw stable.  
1 year.



Harvest Wheat #1920



Redwood #1940



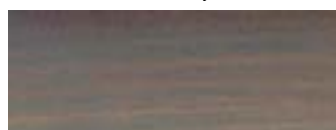
Weathered Gray #1960



Honey Maple #1930



Hickory #1950



Gentry Gray #1942



Barn Gray #1972

Application techniques, wood species and other factors will affect the actual color when finished. We supply free samples for evaluation on your specific wood.





# Wood Stain and Finishes

## *Exterior*



SATTERWHITE LOG HOMES

Color in this photo closely represents Log and Timber Defense Saddle Brown. Actual results will vary. Contact Perma-Chink Systems for samples.



# Wood Stain and Finishes

## Exterior

### Log & Timber Defense™

#### Wood Stain and Sealer in One

A unique exterior finish that keeps rough wood sealed and enhances its natural rustic beauty. Ideal for wood siding and trim, timber frame, beams, board and batten, rough cut cedar and more.

*Log & Timber Defense* penetrates into the wood like an oil coating, but unlike oils, it hardens into a lattice, support and strengthen the natural wood fibers to protect the wood from the inside out.

- Specifically formulated to inhibit the growth of mold and mildew on the penetrating lattice
- Allows texture and grain to show through
- Superior trans-oxide pigments provide longest-lasting beauty
- Low odor and VOC
- Outstanding adhesion and durability
- No peeling or flaking
- Not flammable
- Easy soap and water clean-up
- Environmentally friendly
- User-friendly
- Custom colors available



Color in this photo closely represents Log & Timber Defense Silver Mist.

*Log & Timber Defense* is perfect for refreshing existing homes with oil-based finishes or protecting new construction.

**Surface Preparation:**  
Must be applied to clean, dry surface.

**Application Rates:**  
Approximately 175-250 sq.ft. per gallon depending on the porosity of the wood. Please refer to product label for application instructions.

**Surface Temperature:**  
40° F to 95° F

**Application Methods:**  
Airless sprayer.  
Pump up sprayer.  
Brush.  
Roller.  
Pads.  
Back-brushing required to ensure even coverage. Stir before and frequently during application.

**# of Coats:**  
Up to two coats (refer to label for specific directions for two coat application).

**Drying Time:**  
Dry to the touch in 15 minutes.  
Tack free in 30 minutes.

**Clean up:**  
Soap and water.

**Packaging:**  
1-gallon container.  
5-gallon pail.  
Samples available.

**Storage/Shelf Life:**  
Freeze/thaw stable.  
1 year.



Saffron #215



Buckskin #230



Cimarron #274



Russet #266



Saddle Brown #235



Mesquite #250



Sable #265



Smoky Sky #263



Silver Mist #262



Slate #242

Application techniques, wood species and other factors will affect the actual color when finished. We supply free samples for evaluation on your specific wood.



1-800-548-3554

[www.permachink.com](http://www.permachink.com)



# Wood Stain and Finishes

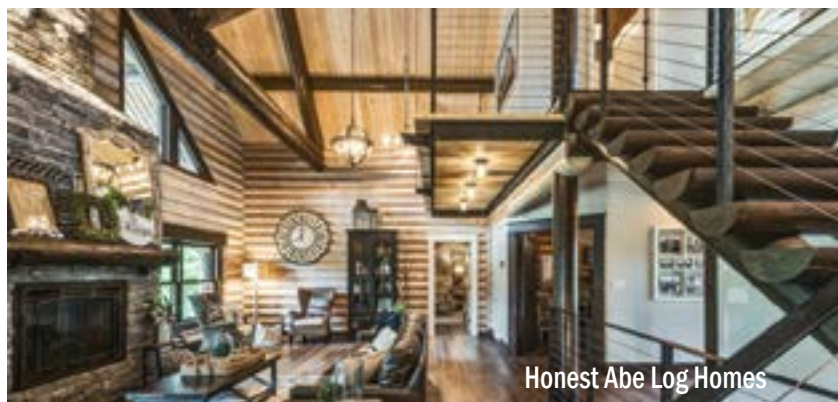
## Interior



Color in this photo represents Lifeline Interior Light Natural. Contact Perma-Chink Systems for samples.

*Lifeline Interior* enhances the beauty of all your interior wood and protects against household odors. *Lifeline Interior* can be used as a color coat or sealing coat on walls when you want to apply an interior clear coat for additional protection or luster. Interior finishes make log walls easy to clean.

To reduce the “picture frame effect” in sun-exposed locations, add *UV Boost* to the first coat of *Lifeline Interior*.



Color in this photo closely represents Lifeline Interior Pickled White and Lifeline Accents Black Walnut.

*Lifeline Interior* will not yellow. You can apply multiple coats to develop the color and film thickness that you desire. *Lifeline Interior* is completely compatible with our other interior finish options.

*Lifeline Interior* breathes to allow trapped moisture to evaporate from logs.

- Long-lasting interior color coat
- Transparent color choices
- Easy application and maintenance
- High coverage rates
- Fast drying
- Very low VOC formula
- Compatible with all *Perma-Chink Systems* wood care products



# Wood Stain and Finishes

## Interior

### Lifeline Interior™

#### Interior Stain for Walls, Ceilings and Other Surfaces



##### Surface Preparation:

Must be applied to clean, dry surface.

##### Application Rates:

1st coat - 350-450 sq. ft. per gallon depending on the porosity of the wood.

2nd coat - 600-800 sq. ft. per gallon.

##### Application Temperature:

40° F to 90° F

##### Application Methods:

Airless sprayer with back-brushing to ensure even coverage OR all by brush. Stir before and frequently during application.

##### # of Coats:

One or more coats depending on the desired color. Stir container every 15 minutes. Backbrush and maintain a wet edge. Topcoat with Lifeline Acrylic Clear Topcoat, Sure Shine, or PCS Clear Shield.

##### Drying Time:

Dry to the touch in 1 to 4 hours. Cures in 72 hours.

##### Clean up:

Soap and water.

##### Packaging:

1-gallon container.  
5-gallon pail.  
Samples available.

##### Storage/Shelf Life:

Freeze/thaw stable.  
3 years.



Clear #110



Butternut #154



Hazelnut #170



Cinnamon #174



Light Honey #112



Dark Honey #122



Driftwood #161



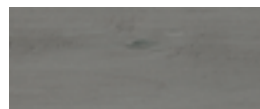
Walnut #165



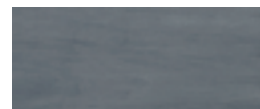
Light Natural #120



Dark Natural #130



Stone Gray #163



Gentry Gray #142



Pickled White #150



Seagull #152

##### Custom Colors Available

Application techniques, wood species and other factors will affect the actual color when finished. We supply free samples for evaluation on your specific wood.



1-800-548-3554

[www.permachink.com](http://www.permachink.com)



# Wood Stain and Finishes

## *Interior*



HONEST ABE LOG HOMES

Color in this photo closely represents Lifeline Interior Pickled White and Lifeline Accents Black Walnut. Actual results will vary.



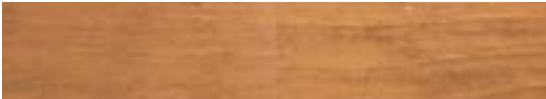
# Wood Stain and Finishes

## Interior

### Lifeline Acrylic™

Gloss/Satin

#### Clear Topcoat for Interior Millwork and Walls



Satin

Gloss

*Lifeline Acrylic* is a furniture grade clear coat for interior use. *Lifeline Acrylic* forms an attractive and durable protective film that adds depth to the finish and makes cleaning wood surfaces a breeze. It can be applied over *Lifeline Interior*, *Lifeline Accents*, *Prelude* or directly onto bare wood.

- Excellent for interior walls, cabinets, paneling, timbers and wood trim
- Highlights the beauty of stained or bare wood
- Protects stain and sealants from abrasion and wear
- Resists yellowing



Satterwhite Log Homes

Color in this photo closely represents Lifeline Interior Light Honey.



Hearthstone Homes

Color in this photo closely represents Lifeline Interior Light Natural.

- Easy application
- High coverage rates
- Fast drying
- Very low VOC formula
- Compatible with all *Perma-Chink Systems* wood care products
- Environmentally friendly
- Free samples available

PURDY®,  
WOOSTER®,  
STAINER®  
Brushes



#### Surface Preparation:

Must be applied to clean, dry surface.

#### Application Rates:

1st coat - 350-450 sq.ft. per gallon on bare wood depending on the porosity of the wood.

2nd coat - 600-800 sq.ft. per gallon on finished wood.

3rd coat - 700-900 sq.ft. per gallon on subsequent coats.

#### Surface Temperature:

40° F to 90° F

#### Application Methods:

Airless sprayer with back-brushing to ensure even coverage OR all by brush. Stir before and frequently during application.

#### # of Coats:

One to multiple coats depending on desired film thickness.

#### Drying Time:

Dry to the touch in 2 to 4 hours. Cures in 72 hours.

#### Clean up:

Soap and water.

#### Packaging:

1-gallon container.  
5-gallon pail.  
Samples available.

#### Storage/Shelf Life:

Freeze/thaw stable.  
3 years.



# Wood Stain and Finishes

## Interior

### Sure Shine™

Gloss/Satin

#### Premium Waterborne Polyurethane-Acrylic Finish

*Sure Shine* is our most durable indoor clear wood finish. It is suitable for all your wood floors and any other interior surface where you want a lustrous or deep-shine finish.

If you want a clear diamond-like finish using fewer coats, *Sure Shine* premium finish is the one to use!

- High coverage rates
- Fast drying, easy to apply
- Resists scuffing and abrasion
- Very low VOC formula
- Compatible with all *Perma-Chink Systems* wood care products
- Environmentally friendly
- Free samples



Satterwhite Log Homes

Color in this photo closely represents Lifeline Interior Light Natural.



Strongwood Log Homes

Color in this photo closely represents Lifeline Interior Light Honey.



Color in this photo closely represents Lifeline Interior Dark Natural.

#### Surface Preparation:

Must be applied to clean, dry surface.

#### Application Rates:

1st coat - 350-450 sq.ft. per gallon on bare wood depending on the porosity of the wood.  
2nd coat - 600-800 sq.ft. per gallon on finished wood.  
3rd coat - 700-900 sq.ft. per gallon on subsequent coats.

#### Surface Temperature:

40° F to 90° F

#### Application Methods:

Airless sprayer with back-brushing to ensure even coverage, paint pad OR all by brush. Stir before and frequently during application.

#### # of Coats:

One to multiple coats depending on desired film thickness. Sand between each coat once cured.

#### Clean up:

Soap and water.

#### Drying Time:

Dry to the touch in 2 to 4 hours.  
Cures in 72 hours.  
For flooring application please refer to the label.

#### Packaging:

1-gallon container.  
5-gallon pail.  
Samples available.

#### Storage/Shelf Life:

Freeze/thaw stable.  
3 years.





# Wood Stain and Finishes

## Interior

### PCS Clear Shield™



Gloss/Matte

#### Premium Waterborne Fast Drying Acrylic Finish

*PCS Clear Shield* is a high-performance interior clear finish designed to protect and enhance the natural beauty of wood surfaces. This premium coating is engineered with advanced crosslinking acrylic latex technology and optimized particle size, ensuring a flexible, ultra-durable finish that bonds tightly to wood for superior adhesion, longevity, and performance.

*PCS Clear Shield* offers long-lasting waterproofing and exceptional washability, standing up to everyday wear and tear. Its advanced UV protection helps prevent sun damage, while the fast-drying formula ensures a smooth, hard surface that resists scuffing, abrasion, and discoloration from water, household cleaners, and chemicals.



Clear topcoat in Gloss finish

Whether you are finishing log walls, trim, floors or wood paneling, *PCS Clear Shield* delivers lasting beauty and superior protection for your home's interior.

- High coverage rates
- Fastest drying clear coat
- Easy to apply
- Resists scuffing and abrasion
- Waterproofed
- Breathable
- UV protection
- Very low VOC formula
- Compatible with all *Perma-Chink Systems* wood care products
- Environmentally friendly
- Free samples



Clear topcoat in Matte finish

#### Surface Preparation:

Must be applied to clean, dry surface.

#### Application Rates:

1st coat - 350-450 sq.ft. per gallon on bare wood depending on the porosity of the wood.

2nd coat - 600-800 sq.ft. per gallon on finished wood.

3rd coat - 700-900 sq.ft. per gallon on subsequent coats.

#### Surface Temperature:

40° F to 90° F

#### Application Methods:

Airless sprayer with back-brushing to ensure even coverage, paint pad OR all by brush. Stir before and frequently during application.

#### # of Coats:

One to multiple coats depending on desired film thickness. Sand between each coat once cured.

#### Clean up:

Soap and water.

#### Drying Time:

Dry to the touch in 2 to 4 hours. Cures in 72 hours.

For flooring application please refer to the label.

#### Packaging:

1-gallon container.

5-gallon pail.

Samples available.

#### Storage/Shelf Life:

Freeze/thaw stable. It may take several days to recover. 3 years.



# Chinking and Specialty Sealants

## Interior & Exterior

### Sealants Overview



Color in this photo closely represents Lifeline Ultra-2 Dark Natural stain and White chinking.

#### Permanently Seal and Protect Your Log or Timber Home

“Chinking” is a term descended from Old English to describe the sealing of gaps and joinery around the interior and exterior of your home. These gaps can allow air and water infiltration and must be properly sealed. A major benefit of a well-sealed home is much better energy efficiency and comfort.

#### Accept No Substitutes

In 1981 we invented synthetic chinking as a permanent solution for sealing and protecting your home. Today, as thousands of satisfied customers can attest, there simply is no substitute for Sealant Systems manufactured by *Perma-Chink Systems*.

#### Versatile Sealant Systems

We have developed ideal solutions for sealing gaps in and around your custom home. *Perma-Chink* will seal wide gaps and is textured to simulate mortar. *Energy Seal* is ideal for sealing narrow gaps and is formulated to blend in with the surrounding finish system.

#### Highest-Quality Ingredients

All of our sealants are expertly formulated with premium acrylic latex, ensuring superior durability and performance. We never compromise on quality, which is why our sealants consistently outperform the competition.

#### Protecting your Dream Home

Air and water infiltration are a threat to your greatest asset - your natural wood home. You will appreciate the peace of mind that can only come from using our Sealant Systems.

#### Virtually Maintenance-Free

We have single-handedly reduced the cost and effort of maintaining your natural wood home. You can look forward to decades of performance from all of our quality sealants.



Color in this photo closely represents Lifeline Ultra-7 Almond stain and Perma-Chink Sandstone chinking.

#### Backed by a 10-year Warranty

We are so confident in our *Perma-Chink* sealant that we back it with a full 10-year warranty. Properly installed *Perma-Chink* will not tear and or delaminate from the surrounding wood for decades to come.

Our Sealant Systems, combined with our Exterior Finish Systems, provide the lowest-maintenance solution for enhancing and protecting your log or timber home. Contact a *Perma-Chink Systems* product support specialist today to request color samples and get expert application guidance.



# Chinking and Specialty Sealants

## Interior & Exterior

### Energy Seal™

#### Specialty Sealant for Log Homes

*Energy Seal* is specially formulated for sealing narrow gaps in log home joinery such as butt joints, window trim, door trim and corners.

It is lightly textured to match wood surfaces for applications where you would like the sealant to be invisible. *Energy Seal* accepts stain colors and blends into the surface of wood joinery.

- Highly elastic
- For use in gaps up to 1 inch wide
- Maintenance free
- Very low VOC formula
- Soap and water cleanup
- Compatible with all *Perma-Chink Systems* wood care products



Color in this photo closely represents Lifeline Ultra-2 Cedar.

#### Energy Seal Coverage Rates

To be applied 5/16" to 3/8" thickness\*

Width of Gap	Feet per 11-oz. Tube	Feet per 30-oz. Tube	Feet per Pail
1/2"	9'	26'	485'
3/4"	7'	20'	375'
1"	5'	13'	243'

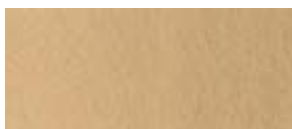
\* Wet thickness impacts coverage rate



White #507



Natural Pine #520



Sierra Brown #505



Slate Gray #542



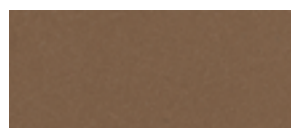
Desert Tan #519



Golden Honey #545



Cedar #530



Dark Natural #550



Classic Brown #523



Adobe #555



Walnut #565



Earthtone #560

Color representations are as close as possible to actual colors. Application techniques and other factors will affect the actual color when finished. We supply samples for evaluation on your specific wood.

#### Surface Preparation:

Must be clean and dry and free of oils and wax. Use Backer Rod wherever possible.

#### Application Rates:

See coverage rate table.

#### Surface Temperature:

40 ° F to 90 ° F

#### Application Methods:

Chink Pump.  
Bulk loading gun.  
Caulk gun.  
Application bag.

#### Depth/Thickness:

Apply between 5/16" and 3/8" thick. Do not exceed 1/2". Do not apply in direct, hot sunlight.

#### Drying Time:

Skins over in 20 minutes.  
Complete curing may take 3 to 8 weeks depending on temperatures and humidity.

#### Clean up:

Soap and water.

#### Packaging:

11 oz. tubes.  
30 oz. tubes.  
5 gallon pail.

#### Storage/Shelf Life:

Freeze/thaw stable.  
3 years.



# Chinking and Specialty Sealants

## Interior & Exterior

### Perma-Chink®

Introducing the ONE-and-ONLY Chinking You Need to Know!

#### Advanced Formula

Originally launched in 1981, Perma-Chink log home chinking has continuously evolved. Recent intensive testing led to major improvements in adhesion, elongation, and overall performance, making it our most advanced formula yet.

Today's Perma-Chink offers excellent qualities in all areas to meet the needs of the industry.

- Elastomeric - Stretches to accommodate log movement
- Great Viscosity - Tools easy in low and high temperatures
- Will not Slump - Applied film stability
- Blister Proof - Excellent heat resistance
- Great Adhesion - Resists separation from logs
- Low VOC - Environmentally friendly
- Freeze/Thaw Stable
- Beautiful Color Palette - Matches shades and hues of today's finishes



Appalachian Log Homes

Color in this photo closely represents Lifeline Ultra-7 Almond stain and Perma-Chink Sandstone chinking.



#### The RHEOLOGY of Perma-Chink

Rheology might sound complex, but it simply refers to how a product flows and spreads. The special additives in *Perma-Chink* chinking help control how the product spreads and sets, ensuring a smooth texture and a strong durable seal - just what you need for lasting protection and a professional look.

#### Rheological properties of Perma-Chink:

Greatly improved low shear (as in standing after application) results in high viscosity to prevent slumping. High shear (as in pumping) decreases viscosity to make the product easier to apply and tool.



Seal Your Home → Save  
Energy → Get Tax Credit

As a log homeowner, you may be eligible for an IRS tax credit when using Perma-Chink Systems sealants for home weatherization. The Energy Efficient Home Improvement Credit allows homeowners to claim 30% of the costs for qualifying energy efficiency improvements, including insulation materials and air sealing systems.

It's advisable to consult with a tax professional or refer to IRS guidelines to ensure that *Perma-Chink* chinking meets the necessary criteria for this credit.



# Chinking and Specialty Sealants

## Interior & Exterior

### Perma-Chink®

#### The Original Flexible Chinking for Log Homes

*Perma-Chink* log home sealant, our flagship product, remains the cornerstone of our reputation. Over the years, we have expanded our offerings to include a comprehensive system of compatible products designed for complete log home care and maintenance.

*Perma-Chink* looks like traditional mortar. It stretches, compresses and tightly adheres to the wood surface to make your log walls weather tight, while enhancing the finished look of your home. *Perma-Chink* is still the easiest and most reliable chinking to apply to your log home.



- Eliminates air and water infiltration
- Use for interior and exterior sealing
- Seals gaps one inch or wider
- Maintenance free
- Very low VOC formula
- 10-year warranty
- Compatible with all *Perma-Chink Systems* wood care products

#### Perma-Chink Coverage Rates

To be applied 5/16" to 3/8" thickness\*

Gap Width	Linear Feet per Pail
1/2"	Use Energy Seal™
3/4"	Use Energy Seal™
1"	259'
1-1/2"	172'
2"	129'
2-1/2"	103'
3"	86'
3-1/2"	74'
4"	65'
4-1/2"	57'
5"	52'
6"	43'

\* Wet thickness impacts coverage rate

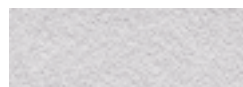
1 Pail = approximately fifty three 11 oz. tubes

1 Pail = approximately nineteen 30 oz. tubes

Color representations are as close as possible to actual colors. Application techniques and other factors will affect the actual color when finished. We supply samples for evaluation.



White #207



Stone #211



Light Gray #212



Medium Gray #224



Sandstone #215



Beige #216



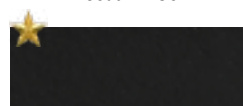
Tan #219



Brown #223



Cedar #230



Black #227



New Color

#### Surface Preparation:

Must be clean and dry and free of oils and wax. Proper backing materials and/or bond breaker must be used.

#### Application Rates:

See coverage rate table.

#### Surface Temperature:

40 ° F to 90 ° F

#### Application Methods:

Chink Pump.  
Bulk loading gun.  
Caulk gun.  
Application bag.

#### Depth/Thickness:

Apply between 5/16" and 3/8" thick. Do not exceed 1/2". Do not apply in direct, hot sunlight.

#### Drying Time:

Skins over in 20 minutes. Complete curing may take 3 to 8 weeks depending on temperature and humidity.

#### Clean up:

Soap and water.

#### Packaging:

11 oz. tubes.  
30 oz. tubes.  
5-gallon pail.

#### Storage/Shelf Life:

Freeze/thaw stable.  
3 years.



# Chinking and Specialty Sealants

## *Interior & Exterior*



STONEMILL LOG & TIMBER HOMES

Color in this photo closely represents Lifeline Ultra-2 Gentry Gray and Light Gray chinking. Actual results will vary. Contact Perma-Chink Systems for samples.



# Chinking and Specialty Sealants

## Interior & Exterior

### Chink-Paint™

#### Change or Renew the Color of Your Chinking

*Chink-Paint* is a high-quality latex paint that is textured to look like *Perma-Chink* log home sealant. *Chink-Paint* can be used to renew or completely change the color of existing chinking. On cosmetic chink joints less than ¼ inch deep *Chink-Paint* can be used to give the home a traditional chinking look. *Chink-Paint* is available in the same eight colors as *Perma-Chink* log home sealant, see page 29.

**Surface Preparation:**  
Surface of wood or existing chinking must be clean and dry.

**Application Rates:**  
100 sq.ft. per gallon.

**Surface Temperature:**  
40° F to 90° F

**Application Methods:**  
Short bristled brush.

**# of Coats:**  
One coat.

**Drying Time:**  
1 hour.

**Clean up:**  
Soap and water.

**Packaging:**  
1-gallon pail.  
5-gallon pail.

**Storage/Shelf Life:**  
DO NOT FREEZE!  
3 years.



#### Linear Feet per Gallon

- 2" joint - 600 feet
- 3" joint - 400 feet
- 4" joint - 300 feet

### Chink-Paint™ Smooth

#### Change or Renew the Color of Your Chinking

*Chink-Paint Smooth* is a highly elastomeric, non-textured, pure acrylic latex paint for renewing or changing the color of chinking. The elasticity of *Chink-Paint Smooth* enables it to expand and contract with the sealant without cracking or peeling.

This material makes it easy to complete the “facelift” process for your log home. *Chink-Paint Smooth* is ideal to use on your chink lines following a wood finish restoration. Simply wait for the stain to dry and apply a coat of *Chink-Paint Smooth*. Available in eight *Perma-Chink* colors, see page 29.

**Surface Preparation:**  
Surface of wood or existing chinking must be clean and dry.

**Application Rates:**  
100 sq.ft. per gallon.

**Surface Temperature:**  
40° F to 90° F

**Application Methods:**  
Short bristled brush.

**# of Coats:**  
One coat.

**Drying Time:**  
1-2 hours.

**Clean up:**  
Soap and water.

**Packaging:**  
1-gallon pail.  
5-gallon pail.

**Storage/Shelf Life:**  
DO NOT FREEZE!  
3 years.



#### Linear Feet per Gallon

- 2" joint - 600 feet
- 3" joint - 400 feet
- 4" joint - 300 feet



Color in this photo closely represents Lifeline Ultra-2 Dark Natural and Sandstone chinking paint.

# Chinking and Specialty Sealants

## *Interior & Exterior*



SATTERWHITE LOG HOMES

Color in this photo closely represents Lifeline Interior Light Natural. Actual results will vary. Contact Perma-Chink Systems for samples.



# Chinking and Specialty Sealants

## Interior & Exterior

### Check Mate 2®

#### Seals Cracks and Checks in Logs

*Check Mate 2* is a highly effective, water resistant sealant designed to prevent water and air infiltration through pronounced cracks (known as checks) in logs, timbers, and wood siding. Sealing upward-facing checks is especially crucial in areas where water can accumulate, as unsealed checks can become prime spots for rot to develop.

*Check Mate 2* is specially formulated to complement the colors of our *Lifeline* finishes.



Clear #1100



Yellow Brown #1500



Golden Brown #1700



Dark Brown #1400



Copper Brown #1600

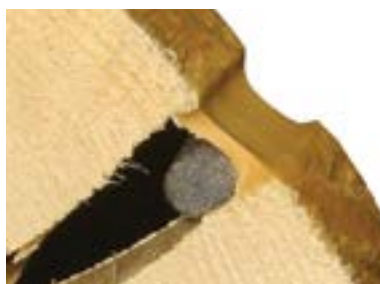


Medium Brown #1300



Walnut Brown #1800

Color representations are as close as possible to actual colors. Application techniques and other factors will affect the actual color when finished. We supply samples for evaluation on your specific wood.



#### Surface Preparation:

Surface of checks must be clean, dry and free from any oils or wax.

#### Application Rates:

One 11 oz. tube will seal 16 feet of 1/2 inch wide or 32 feet of 1/4 inch wide checks. Use Backer Rod wherever possible.

#### Surface Temperature:

40 ° F to 90 ° F

#### Application Methods:

Caulk gun.

#### # of Coats:

Apply at 3/8" thickness. Do not apply in direct, hot sunlight.

#### Drying Time:

Skins over in 1 hour. Complete curing may take several days depending on temperatures and humidity.

#### Clean up:

Soap and water.

#### Packaging:

11 oz. tubes.

#### Storage/Shelf Life:

Freeze/thaw stable.  
1 year.

## Application Tools

The *Albion* bulk loading caulking gun is our most popular tool for applying *Perma-Chink* or *Energy Seal*.



The *Follow Plate* makes bulk loading much easier and cleaner with 5-gallon pails.

We stock a wide selection of quality trowels and spatulas used for tooling *Perma-Chink*, *Energy Seal*, *Check Mate 2* and *Woodsmen*.

#### Available Sizes:

##### Straight Spatulas

##### Blade Width and Length:

2" x 14"  
1-1/2" x 10"  
1-1/4" x 8"  
1-1/4" x 6"  
3/4" x 4"

##### Bent Spatulas

##### Blade Width and Length:

1-1/2" x 10"  
1-1/4" x 8"  
3/4" x 5" (tapered)  
3/4" x 4 1/2"

##### Bent Trowels

##### Blade Width:

4"  
3"  
2"  
1-1/2"  
1-1/4"



# Chinking and Specialty Sealants

## Interior & Exterior

### Woodsman™

#### A Smooth Surfaced Log and Timber Home Sealant

*Woodsman* is a high performance elastic sealant for general use around your house. It can be used during construction between logs, in butt-joints, around windows and doors, woodwork, eaves, soffits, vents and expansion joints. *Woodsman* cures to form a highly stretchable seal that is UV resistant, water-tight and air-tight. It is durable and available in a variety of colors.

*Woodsman* tightly adheres to all materials, including wood, metal, concrete, brick, masonry, porcelain, tile, marble, glass and plastics. It stretches to maintain a tight seal. Use *Woodsman* anywhere, on any surface, in place of ordinary caulk for superior results.

##### Surface Preparation:

Must be clean and dry and free of oils and wax. Use Backer Rod wherever possible.

##### Application Rates:

See coverage rate table.

##### Surface Temperature:

40° F to 90° F

##### Application Methods:

Caulk gun.

##### Depth/Thickness:

Apply between 5/16" and 3/8" thick. Do not exceed 1/2". Do not apply in direct, hot sunlight.

##### Drying Time:

Skins over in 20 minutes. Complete curing may take 3 to 8 weeks depending on temperatures and humidity.

##### Clean up:

Soap and water.

##### Packaging:

11 oz. tubes.  
30 oz. tubes.

##### Storage/Shelf Life:

Freeze/thaw stable.  
3 years.



Pine #615



Honey #625



Tan #635



Cedartone #645



Brown #655



Gray #665

Color representations are as close as possible to actual colors. Application techniques and other factors will affect the actual color when finished. We supply samples for evaluation.

#### Woodsman Coverage Rates

To be applied 5/16" to 3/8" thickness\*

Gap Width	Feet per 11-oz. Tube	Feet per 30-oz. Tube
1/2"	8'	23'
3/4"	6'	17'
1"	5'	14'

\* Wet thickness impacts coverage rate

## Log Home Gasket Tape

- Closed-cell, medium density PVC foam
- Pressure sensitive adhesive
- Maintains a uniform seal between logs
- Pliable between -5° F and 170° F

#### Sizes

3/8 inch, roll of 25 feet (40 rolls/case)

1/2 inch, roll of 25 feet (30 rolls/case)

1 inch, roll of 25 feet (15 rolls/case)





# Chinking and Specialty Sealants

## Interior & Exterior

### Grip Strip™

#### Backing Materials and Bond Breakers

*Grip Strip* is a chemically inert closed-cell polyethylene that is shaped to fit between log courses to form a flat surface for the application of *Perma-Chink* or *Energy Seal*. This makes it easier to maintain a consistent thickness of sealant across the seam, reducing the amount of sealant required and improving the sealant's performance.

#### Advantages of Using *Grip Strip*

- It provides a firm chinking or caulking surface
- Its shape and texture allow it to be easily installed without using staples, nails or glue
- It repels water. (Most open cell products absorb water)
- It is compatible with all commonly available synthetic chinking
- It helps prevent blistering of chinking surfaces
- It provides extra insulation against heat loss



#### Width Sizes

3/4 inch	1200'	per Case
1 inch	960'	per Case
1-1/4 inches	600'	per Case
1-1/2 inches	460'	per Case
2 inches	360'	per Case
3 inches	200'	per Case
4 inches	144'	per Case
5 inches	120'	per Case
6 inches	96'	per Case

### Backer Rod™

#### Backing Materials and Bond Breakers

*Backer Rod* is an extruded closed-cell polyethylene rod that is used in cracks, checks, and gaps before filling them with sealants such as *Perma-Chink*, *Energy Seal* and *Check Mate 2*. Caulk joints should not be more than 3/8" thick and *Backer Rod* provides a way to fill a deep crevice or gap while maintaining the proper sealant thickness for maximum performance.

*Backer Rod* should also be used in checks over 1/4" wide before applying *Check Mate 2*.



- Closed cell polyethylene
- Will not absorb water
- Heat and cold stable
- Should be used to ensure proper thickness of sealants including *Perma-Chink*, *Energy Seal* and *Check Mate 2*

#### Width Sizes

1/4 inch	6400'	per Case
3/8 inch	3600'	per Case
1/2 inch	2500'	per Case
3/4 inch	1100'	per Case
1 inch	550'	per Case

### Log Gap Cap™

Reduces air infiltration where round logs meet window and door jamb trim, *see page 37*.

- Pre-cut foam inserts fit most round log profiles
- Can be cut easily to fit in different sized log diameters
- Seal over with *Energy Seal* or *Perma-Chink* to virtually stop any water or air infiltration





# Chinking and Specialty Sealants

## *Exterior*



Color in this photo closely represents Lifeline Ultra-2 Oak and Tan chinking. Actual results will vary. Contact Perma-Chink Systems for samples.



## Sealing Around Windows & Doors



### No More Air Loss or Water Leaks Around Your Windows and Doors

1. Use masking tape around the window or door seam
2. Insert *Log Gap Cap* into the crevice using trowel  
*\*Log Gap Cap provides an even surface for sealant application and makes it easier to apply a uniform thickness across the gap*
3. Apply *Energy Seal* or *Perma-Chink*
4. Spray with water and tool smooth
5. Remove masking tape as soon as tooling is complete

## Application Guns

Ratchet Style Caulking Guns to apply log chinking and log home sealants, fits 11 oz and 30 oz tubes.

For applying *Perma-Chink*, *Energy Seal*, *Check Mate 2* and *Woodsman*



The *Albion* bulk loading caulking gun for applying *Perma-Chink* or *Energy Seal*

- Professional Quality
- Efficient 12:1 Drive Ratio
- Lightweight Aluminum Barrel
- Double Grip Plates for Long Life

No spanner wrench needed! Barrel is made to rotate

**Cordless** *Albion* lightweight bulk loading gun for *Perma-Chink* and *Energy Seal*



Available in 20 oz

- Powerful - 400 lbs of Dispensing Force
- Fast - Dispense cartridge in seconds
- Long-Lasting - 12 V Lithium Ion Battery
- Control - Variable Speed Trigger

# Borate Wood Preservatives

## Interior & Exterior

### Tim-Bor®

#### Water-Soluble Borate Powder

*Tim-Bor* Professional Insecticide and Fungicide is a water-soluble borate powder that acts as a wood preservative, fungicide and insecticide to control and prevent wood decay fungi, subterranean and drywood termites, wood boring beetles, carpenter ants and other listed pests.

*Tim-Bor* can be dusted into termite galleries to kill termites in as little as seven days. It can also be applied as a 15% liquid solution to new construction or any bare wood to preserve it. Like all borate treatments, exterior surfaces should be protected with one of our *Lifeline* exterior finish systems. *Tim-Bor* stays near the surface of treated materials and we recommend that it be reapplied if the finish system is physically or chemically removed.



**Surface Preparation:**  
Must be applied to clean and bare wood.

**Application Rates:**  
Approx. 200 sq.ft. per gallon of mixed solution.

**Surface Temperature:**  
40° F to 90° F

**Application Methods:**  
Low pressure sprayer or by brush.  
Drill and inject.

**# of Coats:**  
Two coats of 10% liquid solution.  
One coat of 15% liquid solution may be used.

**Drying Time:**  
1 to 3 days.

**Clean up:**  
Soap and water.

**Packaging:**  
1.5 lb. bag.  
25 lb. pail.

**Storage/Shelf Life:**  
Keep dry.  
1 year.

### PenaShield®

#### Ready-To-Use Borate Wood Preservative

*PenaShield* Penetrating Fungicide, Termiticide and Preservative is a ready-to-use borate-based wood preserver that kills and prevents termites, carpenter ants, wood boring beetles and decay fungi. *PenaShield* is a water-soluble treatment containing proprietary penetrants that allow it to diffuse quickly and thoroughly into wood.

*PenaShield* is great for treating decks, fencing, wood-working projects, wooden play structures, sheds, and more. It can also be applied to roofs after old shingles have been removed. Apply *PenaShield* to pressure treated and/or to older wood after it has been cleaned. *PenaShield* should always be applied before sealing or painting. *PenaShield* can be used to treat any bare wood you want to last when used according to label instructions.



**Surface Preparation:**  
Must be applied to clean and dry bare wood.

**Application Rates:**  
One gallon will treat approximately 150-250 sq.ft. of wood surface.

**Surface Temperature:**  
Above 40° F

**Application Methods:**  
Low-pressure sprayer.  
Brush.

**# of Coats:**  
One coat application.  
If applying more than one coat, wait at least 20 minutes between applications.

**Drying Time:**  
1 to 3 days.

**Clean up:**  
Soap and water.

**Packaging:**  
1 gallon container.  
2.5 gallon container.  
5 gallon container.

**Storage/Shelf Life:**  
Do not Freeze.  
1 year.

*Tim-Bor, PenaShield, Bora-Care* are trademarks or registered trademarks of Nisus Corporation.

### Cobra™ Rods

*Cobra Rods* are used to spot treat decay-prone areas such as log ends that are coated with a finish. Once inserted into damp or wet wood the borate/copper complex in *Cobra Rods* dissolves spreading the active ingredients into areas surrounding the rod. This eliminates active decay fungi and helps prevent rot for 8 to 10 years.

*Cobra Rods* are 7/16" in diameter and 2" long. The installation holes may be plugged with the accompanying plastic plugs and hidden with *Energy Seal*. A typical 6 to 8 inch round log end will require two 2" long *Cobra Rods* inserted within 4 inches of the butt end.



*Cobra™ Rods* are a trademark of Genics Inc., Canada



# Borate Wood Preservatives

## Interior & Exterior

### Bora-Care®

#### Borate Wood Preservative Concentrate

Borates are recognized as one of the most effective “green” wood preservatives available. *Bora-Care* is a wood treatment with patented glycol penetrants that kills and prevents termites, carpenter ants, wood boring beetles and decay fungi. It can also be used to kill and prevent termites and wood boring beetles in existing construction.

The active ingredient in *Bora-Care* is a borate salt. Borate salts work by taking advantage of a unique feature in the biology of termites, ants and other insects. When ingested by termites, beetles, or ants, the insect becomes unable to extract nutrition from its food and starves to death. Due to this unique mode of action, insects have not been known to develop any resistance.

*Bora-Care* works differently than most other insecticides, termiticides, and fungicides, and even than other borate products on the market today. It is designed to provide decades of residual protection when applied according to label, providing unparalleled peace of mind. *Bora-Care*'s unique patented blend of glycols works in combination with the borate salts to provide results that are hard to beat. As *Bora-Care* moves deep into the wood thanks to the glycols, it makes those treated timbers unhospitable to a whole range of wood destroying organisms in the process because they can no longer use the wood or other treated materials as a food source.

*Bora-Care* is an EPA-registered termiticide and is labeled for use as a primary termite treatment in new construction. Defend against multiple threats at once and protect your structure with *Bora-Care*.

Borates are generally low in toxicity for humans and animals, especially compared to conventional pesticides.



#### Bora-Care Prevents and Eliminates:

- Drywood termites
- Subterranean termites
- Formosan termites
- Carpenter ants
- Powderpost beetles
- Old house borers
- PLUS: *Bora-Care* will kill and prevent wood-decay fungi and algae

The following table provides an estimate of the amount of *Bora-Care* needed to treat various size logs. In order to determine how many lineal feet of logs there are in a home, multiply the perimeter of the house, in feet, by the number of courses of logs.

#### Application Chart

ROUND LOGS		SQUARE LOGS	
Diameter	Lineal Feet	Dimension	Lineal Feet
6 inch	167	6 x 6 inch	132
8 inch	96	6 x 8 inch	100
10 inch	61	6 x 10 inch	80
12 inch	43	6 x 12 inch	68
		8 x 8 inch	75
		10 x 10 inch	33

NOTE: A 1:1 dilution ratio should be used on logs and beams.  
One gallon of *Bora-Care* concentrate yields two gallons of diluted solution.

#### Surface Preparation:

Must be applied to clean and bare wood.

#### Application Rates:

1 gallon concentrate (2 gallons of diluted solution) will treat up to 800 sq.ft.

#### Surface Temperature:

Above 32° F

#### Application Methods:

Brush.

Roller.

Low-pressure sprayer.

A power impeller-type mixer can be used with an electric drill to shorten mixing time.

*Bora-Care* is a concentrate that must be diluted with clean water before use. The use of warm or hot water is not required, but, if available, can aid the dilution process.

#### # of Coats:

One coat application.

#### Drying Time:

48 hours or until dry.

#### Clean up:

Soap and water.

#### Packaging:

1 gallon container.

2.5 gallon container.

5 gallon container.

#### Storage/Shelf Life:

Preferred storage temperature range 40° F to 90° F.  
1 year.



# Wood Cleaners and Strippers

## *Interior & Exterior*



HONEST ABE LOG HOMES

Color in this photo closely represents Lifeline Ultra-7 Bronze. Actual results will vary. Contact Perma-Chink Systems for samples.



# Wood Cleaners and Strippers

## Interior & Exterior

### Log Wash™

**A Liquid Concentrate for Cleaning and Conditioning Bare Wood Surfaces,  
Exterior and Interior Lifeline Finishes**

#### Cleaning Bare Wood

*Log Wash* is the best product to use for cleaning all bare wood surfaces. Its low pH formula is compatible with the chemistry of wood which prevents unwanted reactions that can darken or discolor bare wood surfaces.

Besides removing dirt, dust, mold, pollen and sanding and blasting media residue, *Log Wash* will remove many types of bare wood discolorations including brown chemical stains. We strongly recommend that all bare wood surfaces be washed and conditioned with a *Log Wash* solution before applying any of our finish systems.



Before



After

#### Surface Preparation:

Use Log Wash instead of bleach for cleaning wood surfaces.

#### Application Rates:

150 to 250 sq. ft. per gallon of diluted Log Wash.

#### Maintenance Cleaning:

Exterior coated surface (1 cup/gallon of water); Interior coated surface (1/2 cup/gallon of water).

#### Cleaning Bare Wood:

Exterior wood surface (2 cups/gallon of water), Interior wood surface (1 cup/gallon of water)

#### Surface Temperature:

40 ° F to 90 ° F

#### Application Methods:

Low-pressure sprayer.

#### # of Coats:

Only one liberal coat application.

#### Drying Time:

Never allow to dry on wall.

#### Clean up:

Water.

#### Packaging:

1-gallon container.

#### Storage/Shelf Life:

Freeze/thaw stable.  
3 years.



#### Maintenance Cleaning

Use *Log Wash* for washing the dust and dirt off interior and exterior finished wood surfaces. Its unique formulation removes dust, dirt and other contaminants from walls and chinking without harming them. Washing your home once or twice a year with *Log Wash* will keep your *Lifeline* finish looking great and will help extend its life.

### Cedar Wash™

**A Ready-to-Use Bare Wood Cleaner for Wood Species Containing Extractive and Resin Oils**

*Cedar Wash* works with certain species of wood that naturally contain very high levels of extractives and resin oils. The presence of these extractives can cause discoloration, stains, and adhesion issues with a coating. Wood species that fall into the category of extractive-rich include Western Red Cedar, Redwood, Walnut and Mahogany. A secondary class of wood species that contain high levels of extractives are Southern Pine, Douglas Fir, Spruce, and Cypress.

- Removes resin oils and wood extractives
- Removes dirt, dust, and pollen
- Very low environmental impact



#### Surface Preparation:

Use to remove resin, oils and wood extractives from the surface.

#### Application Rates:

175 to 225 sq. ft. per gallon of ready-to-use Cedar Wash solution.

#### Surface Temperature:

40 ° F to 90 ° F

#### Application Methods:

Low-pressure sprayer.

#### # of Coats:

Only one liberal coat to bare wood.

#### Drying Time:

Never allow to dry on wall.

#### Clean up:

Water.

#### Packaging:

2.5-gallon or 5-gallon container.

#### Storage/Shelf Life:

Freeze/thaw stable.  
3 years.

# Wood Cleaners and Strippers

## Interior & Exterior

### Wood ReNew™

#### Renews the Natural Beauty of Bare Wood

*Wood ReNew* is a cleaning concentrate for use on bare wood surfaces. A safe, effective cleaner, it is the best product to use for removing UV damaged gray wood fibers.

*Wood ReNew* will also help remove old worn finishes, mill glaze, mold, mildew, and dirt from wood surfaces. **Wood ReNew is not a maintenance cleaner for cleaning finished surfaces.**

One gallon of *Wood ReNew* makes 20 gallons of solution, enough to clean approximately 3000 sq. ft. of wood surface.

#### Surface Preparation:

Use *Wood ReNew* to help remove grayed wood fibers, mill glaze, mold and mildew.

#### Application Rates:

Add 4 cups of *Wood ReNew* to 5 gallons of water. Each gallon of mixed solution will clean approx. 150 sq.ft. of wood surface.

1 gallon container of *Wood ReNew* will clean approx. 3000 sq.ft.

#### Surface Temperature:

40° F to 90° F

#### Application Methods:

Sponge.  
Scrub brush.  
Mop.

#### # of Coats:

As needed. Works best if used along with a pressure washer. Thoroughly rinse.

#### Drying Time:

Never allow to dry on wall.

#### Clean up:

Water.

#### Packaging:

1-gallon container.  
Samples available.

#### Storage/Shelf Life:

Freeze/thaw stable.  
5 years.



### Oxcon™

#### Concentrate Oxalic Acid Solution

*Oxcon* is the only product that will remove dark colored streaks from metallic tannates. It must be diluted with four parts water for use. *Oxcon* solution will remove rust stains caused by nails, screws, and fasteners.

Use *Oxcon* only when needed. We recommend the use of pH Strips to verify that the surface has been adequately rinsed after using any cleaning product.

#### Surface Preparation:

Clean surface with Log Wash before using *Oxcon*.  
Note: *Oxcon* is not formulated to remove intact paint, stain, or clear finishes and may dull painted or metal surfaces if not quickly rinsed with water.

#### Application Rates:

200 sq.ft. per gallon of mixed solution.  
One gallon of *Oxcon* makes 5 gallons of mixed solution and cleans approximately 1000 sq.ft.

#### Surface Temperature:

40° F to 90° F

#### Application Methods:

Low-pressure sprayer.

#### # of Coats:

One application. Thoroughly rinse. Use pH strips to assure adequate rinsing.  
Do not use as a spot treatment.

#### Drying Time:

Never allow to dry on wall.

#### Clean up:

Water.

#### Packaging:

1-gallon container.  
5-gallon pail.  
Samples available.

#### Storage/Shelf Life:

DO NOT FREEZE!  
1 year.



## pH Strips

#### A Note About Rinsing

No matter what product you use to clean bare wood, nothing is more important than making sure you have adequately rinsed the surface. Any chemical residue remaining on the wood can have serious consequences later on.

We always recommend using pH Strips to make sure that the surface of the wood has been sufficiently rinsed, preferably to a pH of between 6.5 and 7.5.

Take the guesswork out of rinsing cleaners and strippers by using pH strips.





# Wood Cleaners and Strippers

## Interior & Exterior

### S-100™

#### An Environmentally Friendly Finish Remover

*S-100* Finish Remover is an easy to use water-based solvent that removes most types of oil and water-based finishes. *S-100* is a gel that can be applied with a brush or an airless sprayer. Once the existing finish has softened, a pressure washer is required to remove the finish. The high water solubility of *S-100* makes it easy to clean up. There is no concern about contaminating the surrounding soil since it is biodegradable.

Unlike sodium or potassium hydroxide strippers, *S-100* will not darken or discolor the wood. *S-100* may not be effective for removing some high-performance coatings that may require a more aggressive chemical finish remover such as *StripIt*. We strongly recommend that you obtain and test free samples of both *S-100* and *StripIt* before placing an order.



**Surface Preparation:**  
None.

**Application Rates:**  
50 to 100 sq.ft. per gallon.

**Surface Temperature:**  
50° F to 90° F

**Application Methods:**  
Brush.  
Roller.  
Airless sprayer.

**# of Coats:**  
As needed.

**Drying Time:**  
Do not allow to dry on wall.

**Clean up:**  
Water.

**Packaging:**  
5-gallon pail.  
Samples available.

**Storage/Shelf Life:**  
Freeze/thaw stable.  
3 years.



### StripIt®

#### High-Performance Stain and Finish Remover



*StripIt* is a water-based, non-hazardous pH neutral stain and finish remover. *StripIt* is an odor free product that will not darken the wood and can remove multiple layers in one application. It can be used for interior and exterior applications. It will not raise the grain.

*StripIt* quickly and easily cleans up with water. As with any chemical, it is imperative to follow the directions on the label. We recommend the use of *pH Strips* to ensure the surface has been adequately rinsed after using any chemical strippers.

- Will not harm or discolor chinking or sealants
- Will not harm, mar or discolor metal surfaces
- Odor free
- Zero VOC

*StripIt® is a trademark of Chemique®*

#### Find a Contractor

Visit our website and click on *Find a Contractor* link to locate a log home restoration contractor near you. Or give us a call.

**Surface Preparation:**  
None.

**Application Rates:**  
40-55 sq.ft. per gallon.

**Surface Temperature:**  
40° F to 90° F

**Application Methods:**  
Airless sprayer.  
Brush.  
Roller.

**# of Coats:**  
As needed.

**Drying Time:**  
Do not allow to dry on wall.

**Clean up:**  
Water.

**Packaging:**  
5-gallon pails.  
Samples available.

**Storage/Shelf Life:**  
Protect from freezing.  
2 years.



# Wood Restoration Epoxies

## Interior & Exterior

### M-Balm™

#### Epoxy Wood Consolidator

Wood that has lost its integrity due to decay or insects can be hardened and consolidated with *M-Balm*. This two-component liquid epoxy penetrates into soft, porous or spongy wood to form a strong water-resistant mass. *M-Balm* should always be used in preparation for filling pockets of decayed wood with *E-Wood* epoxy putty.

- Two-component liquid epoxy
- Low viscosity for penetration into soft, spongy and porous wood
- Forms a hard, water-resistant mass
- Should be used prior to filling pockets of decayed wood with *E-Wood*



Applying *M-Balm*



Wood fibers consolidated with *M-Balm*

**Surface Preparation:**  
Apply only to dry wood.

**Application Rates:**  
15 to 20 sq.in. per ounce of mixed *M-Balm*.

**Surface Temperature:**  
40° F to 90° F

**Application Methods:**  
Squeeze bottle.  
Syringe.  
Small brush.

**# of Coats:**  
Thoroughly saturate wood.

**Drying Time:**  
Do not allow to dry on wall.

**Clean up:**  
Uncured mixed *M-Balm* (Part A and Part B) may be cleaned up with white vinegar then flushed with water.

**Packaging:**  
2-component 24 oz. package.  
2-component 1.5 gallon package.

**Storage/Shelf Life:**  
Freeze/thaw stable.  
1 year.



### E-Wood™

#### Epoxy Wood Putty

For filling voids in decayed wood, *E-Wood* is the perfect product to use. *E-Wood* is a two component epoxy wood putty that may be used to fill in wood voids. It can be textured to match the appearance of the surrounding wood. Hardened *E-Wood* filler can be sanded, shaped and stained.

- Two-component wood tone epoxy putty
- Can be shaped, molded and textured to match the surrounding wood
- Soft or decayed wood should be consolidated with *M-Balm* first
- Hardens in 2 to 4 hours



Cavity filled with *E-Wood*



Stain applied to *E-Wood*

**Surface Preparation:**  
Should be applied after using *M-Balm*. No waiting is necessary.

**Application Rates:**  
1.8 cubic inches per ounce mixed A & B components.

**Surface Temperature:**  
40° F to 90° F

**Application Methods:**  
Press into voids using gloved hands. Tool and texture within 30 minutes of application.

**Drying Time:**  
Hardens in 2 to 4 hours depending on temperature.

**Clean up:**  
Uncured mixed *E-Wood* (Part A and Part B) may be cleaned up with white vinegar then flushed with water.

**Packaging:**  
2-component 32 oz. package.  
2-component 2-gallon package.

**Storage/Shelf Life:**  
Freeze/thaw stable.  
1 year.



#### Contractor References

We can refer you to friendly professional contractors in your area who use and recommend our products.  
<https://www.permachink.com/general/find-a-contractor>



# Wood Restoration Epoxies

## Interior & Exterior

### E-Wood™ Paste

#### Epoxy Wood Paste

*E-Wood* paste works excellent on window trims, small checks on log ends and other places where putty may be difficult to apply. It can be textured to match the appearance of the surrounding wood. Combine equal parts of *E-Wood Paste* by volume (A & B) and mix together by kneading or with a spatula until the color is uniform while wearing disposable gloves. Mix no more than what can be applied in 15 minutes. Allow product to cure before sanding and staining.

- Two-component wood tone epoxy putty
- Can be shaped, molded and textured to match the surrounding wood
- Soft or decayed wood should be consolidated with *M-Balm* first
- Hardens in 2 to 4 hours

The *E-Wood Paste* in tubes is the easier version with Part A & Part B in a special tube that eliminates the measuring and mixing.

The nozzle that comes with the product is a static mixer that mixes both parts of the paste and it comes out ready to apply with no additional mixing necessary. The nozzle applicator makes it easy to reach into small cracks and crevices that may be difficult to reach with a spatula or putty knife.

Once you have applied what you need, just remove the nozzle and replace the sealing cap that comes on the tube and save the unused product for the next time you need it.

**Surface Preparation:**  
Should be applied after using *M-Balm*. No waiting is necessary.

**Application Rates:**  
1.8 cubic inches per ounce mixed A & B components.

**Surface Temperature:**  
40 °F to 90 °F

**Application Methods:**  
Press into voids using gloved hands. Tool and texture within 30 minutes of application.

**Drying Time:**  
Hardens in 2 to 4 hours depending on temperature.

**Clean up:**  
Uncured mixed *E-Wood Paste* (Part A and Part B) may be cleaned up with white vinegar then flushed with water.

**Packaging:**  
One 8 oz. tube with nozzle  
2-component 32 oz. package.  
2-component 2-gallon package.

**Storage/Shelf Life:**  
Freeze/thaw stable.  
1 year.



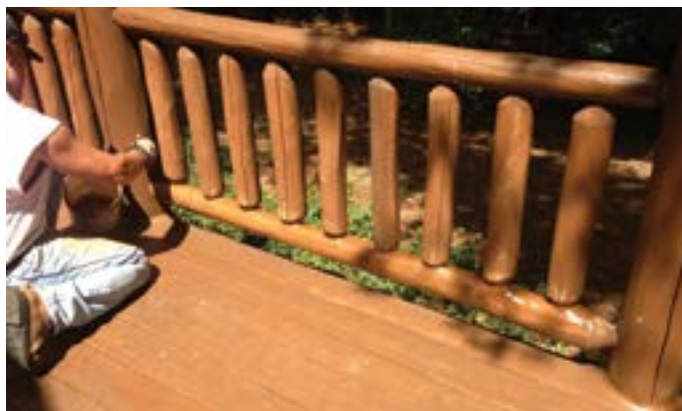
Epoxy is the perfect wood filler for permanent patching and repairs of rotting logs, rails, window sills, damaged door jambs, and wood trims that are difficult to remove and expensive to replace.



Remove any loose or decayed wood, and brush away any debris. For best results, apply *Tim-Bor* or *Bora-Care* borate wood preservative to stop rot. Allow to dry and apply *M-Balm* wood consolidator that helps harden damaged wood.



Mold *E-Wood* epoxy to contour the shape of the rail.



Allow *E-Wood* to cure before staining.

# Fasteners

## Interior & Exterior



## Log Boss™

### Fasteners for Log Homes

*Log Boss* is the fastener with maximum holding power and superior strength. *Log Boss* is specifically designed for log and timber structures.

The 3" long thread provides the grip necessary for pulling even the most difficult logs into place while the larger shank diameter increases the overall strength and pulling power.



### Features:

- No pre-drilling required
- No washer needed. Drive it one time and forget it!
- Flat head design easily counter-sinks with maximum pulling power
- The wing reduces torque required to drive the screw
- Coated for minimum friction and corrosion protection
- Made in the USA



### Length available:

6", 7", 8", 9", 10", 11", 12", 13", 14", 15", 16"

(Call for information about other available lengths)

Packages includes one 5/16" hex head driver.

### Wing Advantages

The wings clear out the splinters created by the thread as the fastener pulls down into the wood.

We also offer a complete line of wood-to-wood code approved fasteners for decks, ledger boards, and large timber applications.



## Sanding Disks and Holders



In log and timber homes, sanding discs are used to efficiently remove old finishes, prepare surfaces for staining and smooth out rough areas on the logs, ensuring a clean and even surface for a new coat of stain or sealant.

### Available Sizes:

Available in diameters of 4", 5" and 7" in coarse, medium and fine grit.

### Grit Selection:

**Coarse Grit:** Use for removing large amounts of old finish or smoothing rough areas (e.g., 80 grit).

**Medium Grit:** Use for removing old finishes and small imperfections (e.g., 100 grit).

**Fine Grit:** Use for final smoothing and preparing the surface for staining or sealing (e.g., 120-150 grit).



A corresponding diameter sanding disk holder is required for use.

## Osborn™ Buffing Brushes

- Requires a buffer or polisher with 5/8 x 11 NC threads
- Nylon fibers impregnated with *Ultra Grit* abrasive
- Long lasting

### Available Sizes:

Cup brush	6" diameter, 80 grit.
Cup brush	6" diameter, 120 grit
Cup brush	4" diameter, 80 grit
Cup brush	4" diameter, 120 grit



## Wood Grinding Disks

### Available Sizes:

- **Wood Shark**, 4" diameter cup shape, coarse or medium texture.
- **Wood Shark**, 4" diameter dish shape, coarse or medium texture.



- Requires an appropriate size angle grinder for use
- Ideal for removing decayed or unwanted wood
- Long lasting



4" Wood Shark Dish Shape

# Log Home Care and Maintenance



HEARTHSTONE HOMES

Color in this photo closely represents Lifeline Ultra-7 Smoke. Actual results will vary. Contact Perma-Chink Systems for samples.



## Payment Terms and Conditions

### Forms of Payment:

We accept MASTERCARD, VISA, DISCOVER and AMERICAN EXPRESS. On approved credit, terms are Net 30 from date of invoice.

### Shipping:

Most orders are shipped within 24 hours Monday-Friday.  
FedEx Home Delivery: Includes evenings and Saturdays options, where available.  
Truck Carriers: Monday-Friday deliveries.

### Terms:

Prices and product availability are subject to change without notice. Seller is not responsible for consequential damages. All returns require an advance return authorization number (RAN). We will accept returned items within 90 days, with no restocking fee. Returns after 90 days will not be accepted.

For delivery to your doorstep or additional information contact Perma-Chink Systems, Inc. at the following locations:

#### Tennessee *Eastern Division:*

1605 Prosser Road, Knoxville, TN 37914  
(800) 548-3554

#### Tennessee, *Sevierville*

1357 Dolly Parton Parkway, Sevierville, TN 37862  
(865) 774-3307

#### Washington *Western Division:*

15459 NE 95th St., Redmond, WA 98052  
(800) 548-1231

#### Montana:

3112 US Highway 93 N, Stevensville, MT 59870  
(800) 479-7090

#### Colorado:

1960 Airport Road, Rifle, CO 81650  
(800) 433-8781

#### Minnesota:

12632 Fromelt Loop NW, Rice, MN 56367  
(877) 244-6548

#### Pennsylvania:

7174 Shavers Creek Road, Petersburg, PA 16669  
(800) 257-4864

**Visit Us Online to Find Dealers and Distributors  
Near You.**



1-800-548-3554

[www.permachink.com](http://www.permachink.com)

SHOP ONLINE 24/7



### Looking for a PRO?



When it comes to caring for your log or timber home, it is reassuring to have a contractor you can trust - one who offers expert advice and is committed to delivering the best results. Our network of independent professional log and timber home contractors is ready to assist you.

Visit our website and click on *Find a Contractor* link to locate a log home restoration and maintenance contractor near you. Or give us a call 1-800-548-3554

### Be a part of our LOYAL CUSTOMER PROGRAM



Receive our monthly news in your inbox.  
Subscribe online.

✓ Appearance ✓ Longevity ✓ Value ✓ Environment

# PERMA-CHINK<sup>®</sup> SYSTEMS, INC.

[www.permachink.com](http://www.permachink.com)

1-800-548-3554



Rev 3/25

*Buy From Perma-Chink Systems,  
The Longest-Lasting Family of Products!*

Proudly Made in USA



Check out Monthly Specials and Workshop Schedules on [www.permachink.com](http://www.permachink.com)